



# THE BULLETIN



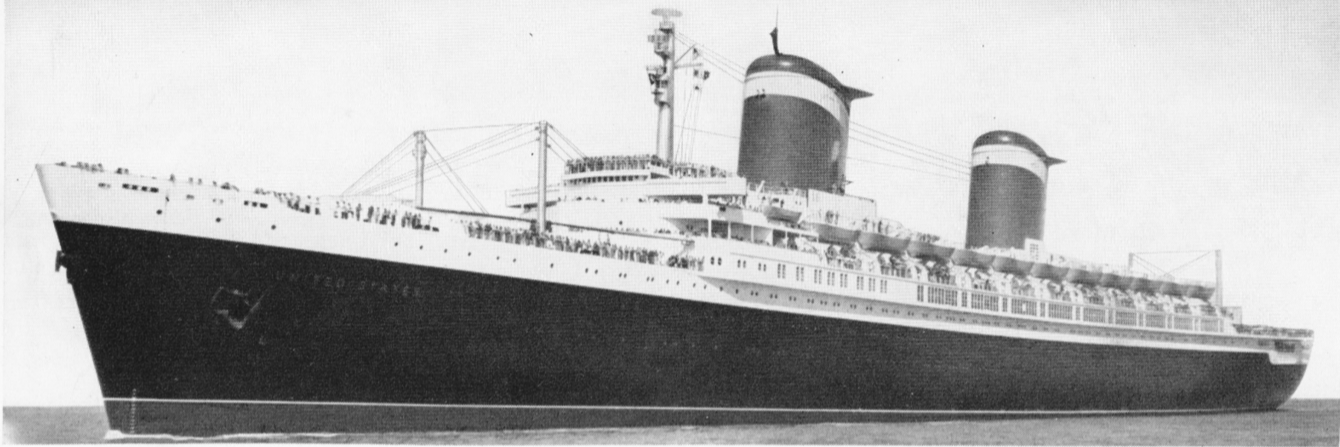
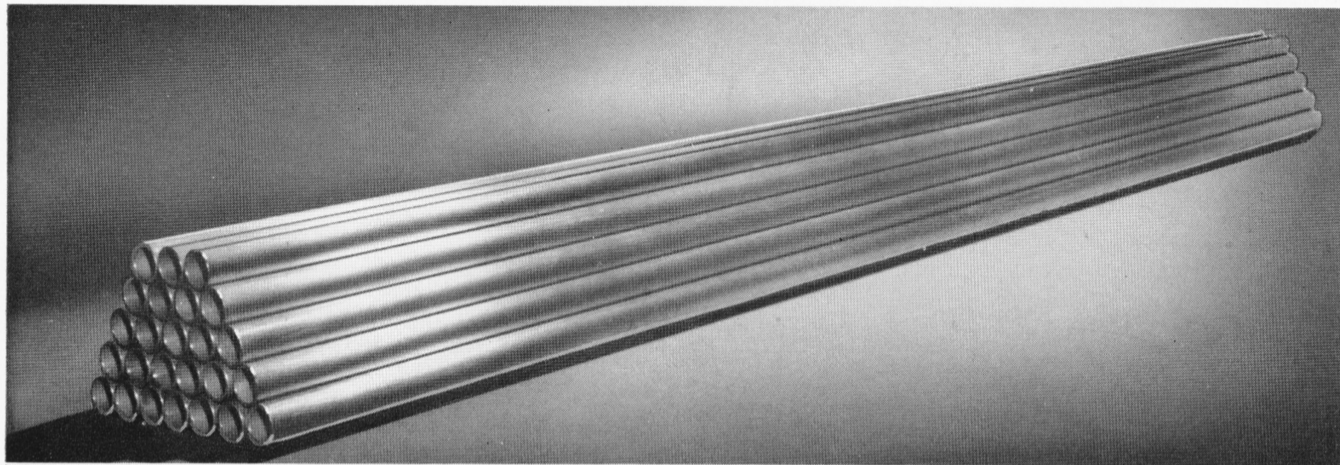
Published by the Scovill Manufacturing Company for its Employees.

Vol. XXXVI

August 11, 1952

No. 14

## Scovill Condenser Tube Used in Superliner "United States"



As Scovill "end products" are used in such a great variety of finished goods, it is not often possible for us to state definitely that some particular finished item or product was made in whole or part at Scovill.

The Superliner SS "United States", however, can be pointed to as containing at least one identifiable Scovill product. We are proud to have 50,000 lbs. of our Cupro-Nickel, 30% condenser tubes installed in this ship.

### Two Retirements

WILLIAM AYLWARD, Trucking, retired from active Scovill service as of July 21, 1952.

Mr. Aylward first came to Scovill on March 14, 1912, and has a continuous service record since 1915. He has served as foreman in Trucking since 1936, and prior to that date had been a foreman in Assembling.

EDWARD ROBINSON, Carpenter Shop, has been added to the Special Retirement List as of August 1, 1952.

Mr. Robinson was hired on December 1, 1910, and also has a continuous service record since that date. Except for two years in the Tin Shop, he has always been in the Carpenter Shop. At the time of his retirement, he was serving as Assistant Foreman.

### Scovill Displays

August 11, 12, 13—Southern Garment Manufacturers' Association Convention at the Hotel Peabody, Memphis, Tennessee.

August 18, 19, 20—Textile Merchants and Associated Industries Convention, Hotel Statler, St. Louis, Mo.

Both conventions will be attended by representatives of garment manufacturing companies, notably the work clothing group. Scovill supplies this industry with tack buttons, snap fasteners, rivets and burrs, wire trim and zippers.

The S.S. "United States"—pride of American shipbuilding industry—was designed by Gibbs & Cox, Inc., built by Newport News Shipbuilding and Dry Dock Company, and is operated by the United States Lines.

The new Queen of the Seas broke the east-west and the west-east trans-Atlantic speed records formerly held by the

British Liner "Queen Mary".

The journey to England was made in three days, 10 hours and 40 minutes, breaking the Queen Mary's 1938 record of three days, 20 hours and 42 minutes. Her return trip was made in three days, 12 hours and 12 minutes; topping the Queen's former record of three days, 21 hours and 45 minutes.

### The Strike Continues

There has been little sense to this strike from the beginning. It has lasted seven weeks. Bargaining unit employees of the Main Plant and Waterville Division have lost about \$2,000,000 in wages, plus additional large sums in fringe benefits. The Company's offer which averaged to be worth at least 25 cents per hour worked was exceptionally liberal. It has not been equaled by other companies.

The Main Plant is in production in a small way. Each day production is picking up. Each day a few more bargaining unit employees are entering the plant. They are, of course, receiving the 11-cent-per-hour increase in their pay which was put into effect on June 9.

The accumulation of illegal actions by pickets has caused the Company to seek an injunction. Many persons on the picket line apparently have no idea of decency toward others. Some cowardly individuals are resorting to threats over the telephone. All of these occurrences indicate a feeling of desperation on the part of these ill-advised individuals.

We have hired some new persons. They will retain their jobs so long as they perform satisfactorily. So will others whom we expect to hire. Our gates are open to anyone who may wish to return to work. Get in touch with your supervisor if you wish to come to work.

Alan E. Curtis  
Vice-President

### Yes, We Are Running Manufacturing Depts

As this is being written, the following Manufacturing Departments are operating in the Main Plant:

Blanking, Drawing, Trim & Knurl, Press 1, Mfg. Eyelet, Press 2, Annealing, Buff 1, Lacquer, Plating, Dip, Rolling, Alum. Finish, Assembling, Lipstick, Relay, Solder, Mfg. Packing, Gripper Eyelet, Button Eyelet, Closing, Japan, Button Packing, Chucking, Cleaning, Automatic Screw Machine, Hot Forge; Slide Fastener—Chain Machines, Finishing and Assembling; Mfg. Trucking and Mfg. Elevators.

### Here's One Reason We're Operating

It is important that we keep operating if there are to be jobs for people in the Bargaining Unit when this present situation is over.

Our customers cannot wait indefinitely on Scovill if Scovill is unable to fill their orders. Some orders have been cancelled already. Unless we can deliver, even in part, it is very likely that other orders that were in process (or on our books) will be cancelled.

Let me explain it in terms of your own daily living:

If your present grocer should close his doors for several weeks, you would have to buy your necessities elsewhere. When your ex-grocer does open his doors again, you may or may not go back. Most likely you will stay with the one who took care of you when in need.

The same is true in our business. If we lose customers now, their business may be lost forever. Loss of customers could well mean loss of jobs permanently. We, undoubtedly, will have less jobs to offer when the strike is over.

Working now is far from "scabbing"—it may mean your future security. Yes, we're operating in the Manufacturing Division, but we could certainly do a great deal better if you were in.

*Arthur M. Rogers*  
Vice-President, Mfg.

### Arthur M. Rogers Named Asst. To Vice President

Mr. Paul E. Fenton, Vice-President in charge of Manufacturing Sales, has issued the following notice:—

Effective August 1, 1952, Arthur M. Rogers has been appointed assistant to the Vice-President in charge of Manufacturing Sales. Mr. Rogers has assumed the responsibility of coordinating the sales of Manufacturing Services. He also functions in the capacity of assistant to the Vice-President in matters pertaining to personnel, automobiles, and Sales Department budgets and expenses.



# THE BULLETIN



Published by the Scovill Manufacturing Company for its Employees.

99 Mill Street, Waterbury, Connecticut

Supervisor of Publicity: DAVID S. MORELAND

Managing Editor: MARGARET E. FENSKE

Art Editor: GEORGE E. SLATER

Contributing Staff:

Judy Bradshaw, Ray Ladden, Harry Shewbridge

"We pledge ourselves to investigate thoroughly for accuracy before publication the material presented in THE BULLETIN."

Vol. XXXVI

August 11, 1952

No. 14

## This Is America

Where her people own 46% of the World's electric power, 48% of its radios, 54% of its telephones, 59% of its steel capacity, 60% of its life insurance policies, 85% of its automobiles and 92% of its modern bathtubs—statistics will prove that in the 150 years of her dynamic, adventurous life, America has made more progress than all the other nations have made in 6,000 years.

Your America—where the free enterprise system has enabled every American worker to produce and possess more than six times as much goods as the average worker outside the United States. No other system has equalled or closely approached that record.

This is America—where we live better than the people of any other nation on earth. Nowhere else in the world could we accumulate so many material things in return for so small an expenditure of effort.

No people anywhere on earth enjoy the high standard of living that we living in America enjoy today.

This is America.

### SERA Rifle

As of Aug. 4, the Scovill team is leading the Moon-Lite League with high score of 1997 and 143 x's.

The League is scheduled to hold nine matches this season. Six have been held and Scovill men have won all of them.

Matches are held at Lyman Range in Middlefield. Remaining matches for the SERA men are:

- August 11 vs. Winsted
- August 18 vs. Cheshire
- August 26 vs. Mossberg

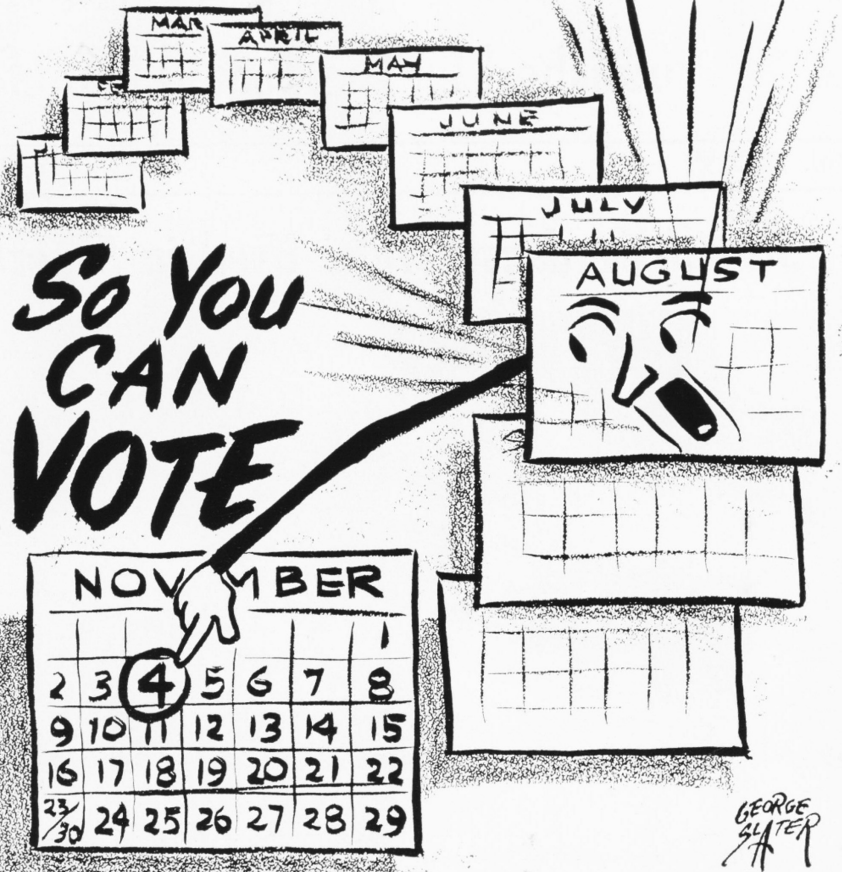
### Fishing Notes

By Ray Ladden

JIM LITTLEJOHN is complaining about the weather in Scotland. In his last post card, he said that the weather had improved. Wonder if it's his way of telling us he hasn't caught any fish yet.

LES HART tells me that PETE RABUSKAS caught a nice 18" Brown Trout. By the way, there are plenty more in the pond. Bass should be ready to strike these cool nights. LES also tells me that few fish were caught during the past two weeks.

# REGISTER NOW!



## Poison Ivy — Leaves of Three

Everyone should learn to recognize the poison ivy plant and to avoid it. Unlike any other plant or vine, there are three leaves on each stem. During most of the year, they are dark green but in the fall they turn reddish.

The three-leaved plant grows abundantly both as a vine and as a small bush in the Connecticut countryside. It tenaciously climbs over fences, old

buildings and rocks. It spreads out on the ground. It grows along the roadside, scrambles up hillsides and even up trees.

### Poisoning

Contact with the sap of the plant causes a skin condition characterized by burning and itching, followed by a rash and swelling. This may develop into severe blisters. These sometimes become infected and, thus, are slow to heal. Ivy poisoning makes its appearance from 24 hours to as long as seven days after contact.

Whenever the leaves, stalks or roots of poison ivy are crushed—even slightly—the sap escapes. The poisoning can, therefore, result from contact with the contaminated implements, gloves or clothing used in handling the plants. The inhalation of smoke produced by burning of the plant may also be disastrous to those in the vicinity, as the oily sap from such cut branches rides on the soot rising from the fire.

### Precautions

Though immunization measures for ivy poisoning have met with some degree of success, they are not as yet completely effective. The wisest plan is to avoid any unnecessary contact with the plant. Use caution when removing it from property. For example, it can be eradicated with a spray of 2, 4-D (2, 4-Dichlorophenoxyacetic acid) or similar inexpensive chemicals.

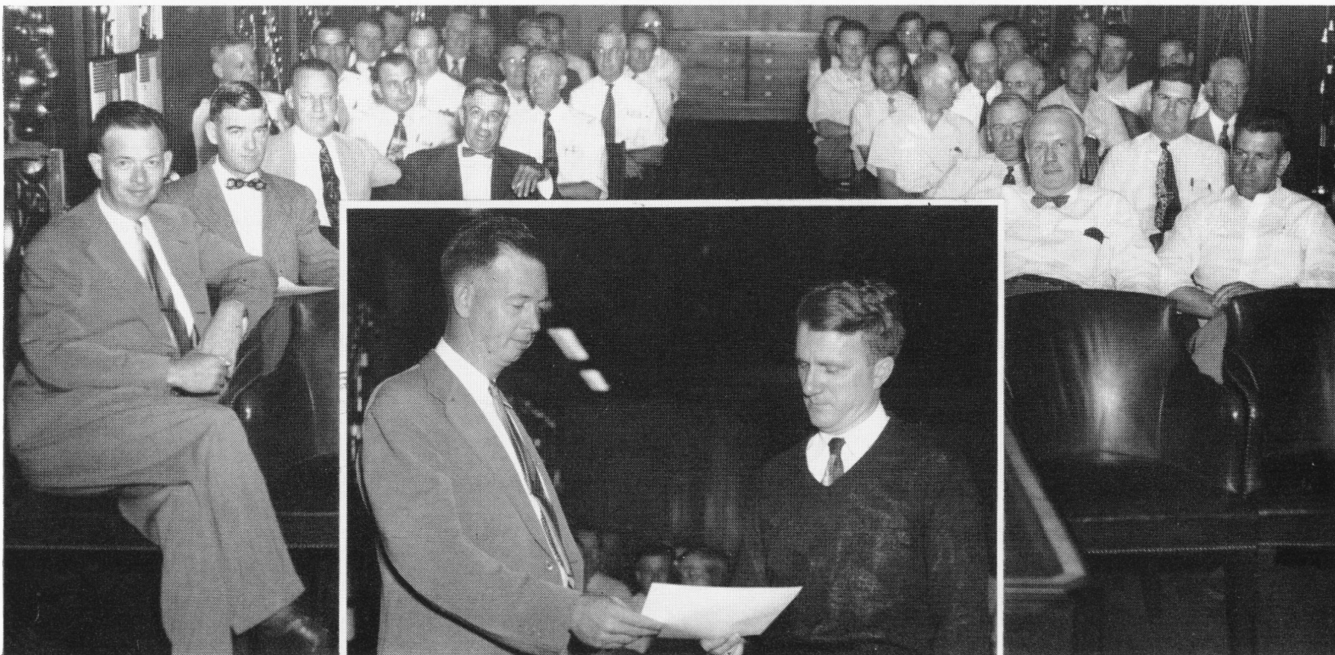
If exposure has occurred, act promptly to remove the sap from the skin. This sap is an oily substance insoluble in water, so any attempt to remove it with water alone will prove futile. Scrub the affected area thoroughly but gently with an abundance of strong, soapy lather. Then rinse off with plenty of water.

Poison ivy is not a pleasant aftermath of hiking, picnicking, playing or working out-of-doors. Learn to recognize the leaflets three—and let them be! Or, use caution in getting rid of this troublesome plant.



Frank N. Bogush, Mfg. Eyelet Tl.  
James L. Burnes, Cont. Strip Mill  
Anthony P. Mazurkivich, Drafting

## Supervisory Training Graduates Receive Certificates



Certificates were presented to 230 supervisory personnel throughout the plant upon their completion of the course in human relations recently.

Chief Maintenance Engineer Tom Colina presented certificates to the Maintenance Engineering group (above). Welding Shop Foreman Joe Yinkosky receives his (insert).

## Art Work Is More Than Just Hobby For Jerry Sevigny



Jerry Sevigny of Chucking Tool says that he is never tonesome because of his interest in art. It keeps him well-occupied during his spare time and gives him so much

pleasure. His hobby includes paintings, water coloring, sketching, charcoal and pen and ink work. He is shown above with some of his most recent work.

Almost everyone has a hobby of some sort, but few people develop it to the stage that Jerry Sevigny has. Although always interested in painting and art work, Jerry never did anything about it until he returned from military service some six years ago.

While serving with the 97th Infantry Division in both the Pacific and European theatres of war, Jerry made it a point to visit museums in France and Japan where he saw some of the great masterpieces. This really stimulated his interest in art.

When he was discharged from service, he attended the Waterbury Art School two evenings a week. Later he studied at the Hartford School of Creative Art for a year and a half.

### Keep The Boat Afloat

Here are some simple rules for small boat safety:—

1. Know your boat. Every boat has its limits. Don't overload. Seats don't indicate capacity. Two or three adults may be a full load under many conditions.
2. Balance your load.
3. Keep low in the boat. Step in the center when boarding. Keep low when necessary to change seats.
4. Watch the weather. Head for a protective shore before the storm breaks. If caught out, seat passengers on the boat bottom.
5. Head into waves if they become high.
6. Use the right motor and boat. Too much power can swamp a small boat. Avoid sharp turns.
7. In row boats, carry an extra oar in exposed waters.
8. Don't take chances with children. Carry and use life jackets for children and non-swimmers. Don't be too sure of your ability to lick any situation. Weekend papers write the final sad chapter to many small boat outings where overconfidence started the trouble.

Although he's done about fifty pieces, landscape scenes are his favorite, but he'll paint anything that happens to strike his fancy.

One day he decided to do a still life of a bag and two apples. He won the Elizabeth Kirk prize for that painting in 1949 and, the following year, the Purchasing Prize for a carefully detailed study of Marine subjects. Be-



*Q:—I hold an individual membership in Blue Cross at Scovill and my wife holds an individual membership in another Company. Are we eligible for maternity benefits?*

*A:—Yes, as long as both of you have held membership in Blue Cross for eight continuous months.*

*Q:—How much does Blue Cross pay towards the cost of electrocardiograms, basal metabolism and other special services listed in the Blue Cross Contract?*

*A:—Blue Cross will pay full cost of these services for 21 days each year in member hospitals if your doctor prescribes bed patient hospital care as necessary for treatment.*

*Q:—I recently heard that Blue Cross membership fees were increased in New York City. How does this affect Connecticut Blue Cross members?*

*A:—It doesn't. Your Connecticut Blue Cross Plan is an independent plan for the people of Connecticut.*

*Q:—What are the maximum benefits—in dollars and cents—that I can get as a Blue Cross member?*

*A:—Blue Cross has no maximum during the 21-day basic period because of the "special service" feature. Whether your special services total one dollar or a thousand dollars—or more—Blue Cross will pay for them completely during the 21-day basic period.*

sides painting, Jerry also does a little water coloring, sketching, charcoal, and pen and ink work.

Although he paints for his own amusement, his interest and talent have produced many fine paintings which have been on display in many art galleries in Connecticut and Rhode Island.

If you wonder just how good Jerry is as a painter, don't ask him. Go down to the Mattatuck Museum and take a look at some of his work.

### Feet Killing You?

If they are, you had better take a quick inventory of your "dogs" and shoes too.

Here are a few troublesome conditions that may cause you to wonder why your disposition sours and you are fatigued during the day.

1. Watch your shoe heels — keep 'em repaired.
2. Cut your toe nails straight across to prevent ingrowing nails. Don't cut down into the corners.
3. Prevent corns, callouses and bunions by wearing properly fitted shoes. These are caused by friction, uneven pressure and tightness of footwear.
4. Men—change your work-socks daily. Women are more stocking-conscious than men.
5. Alternate the wearing of your shoes. This allows the shoes to dry out and will improve the hygiene of your feet.
6. Wear work shoes which are just as well repaired as your dress shoes.
7. Sweaty and tired feet can be refreshed by bathing in cool water with epsom salts. Dry them well and massage your feet muscles with a kneading and stretching action.
8. When at home for the evening, remove your shoes and put on a comfortable pair of moccasins or house slippers, and relax.

## Your Credit Union

Usual business of the Scovill Credit Unions is being carried on, according to the following schedule, during the strike.

### Credit Union No. 1

Days—Monday, Tuesday, Wednesday and Thursday.

Time—12 noon to 4:30 p.m.

Day—Friday

Time—8 a.m. to 4:30 p.m.

Place—Credit Union #1 Office

### Credit Union No. 2

Days—Monday, Tuesday, Wednesday, Thursday, Friday and Saturday

Time—9 a.m. to 9 p.m.

Place—14 Galvin St.—home of Walter Derouin

Telephone—4-3386

### Credit Union No. 3

Days—Wednesday, Friday

Time—5 p.m. to 6 p.m.

Place—SERA Clubhouse

### Credit Union No. 4

Days—Tuesday, Thursday

Time—5 p.m. to 6 p.m.

Place—SERA Clubhouse

### Waterville Division

Day—Thursday

Time—7 p.m. to 9 p.m.

Place—Basement of Immaculate Conception Church

## Inter-Dept Golf

Standings as of August 5

	Wins	Losses
Vaughn-Sabis	7½	2½
Berube-Sickles	8	3
Fuller-Koslowski	5½	3½
Brislin-Connelly	6	4
Corrado-Corrigan	6	4
Coffey-Kozen	5	4
Yurchyk-Vadnais	5	5

Jim Brislin has low gross of 34. Len Corrado is a close runnerup with 35.

Low net honor goes to John Yurchyk who scored 26. Jim Brislin is right behind with a 27.

Although Tuesday is the scheduled night of play, teams are playing at their convenience temporarily.

## Family Album



An important day in the life of Betty Ann Fusco was May 30 when she made her First Communion. She'll be eight years old on August 25. Her dad is Nick of the Tube Mill. Her mother, Betty, is of Employment and, brothers Nick, Jr. and Ray are of Gen. Trng. No. 1 and ASMD respectively.

# Capacity Crowds Enjoy Facilities at Woodtick Recreation Area



It's been "full house" at the Woodtick Recreation Area this summer as employees and their families have taken advantage of the available facilities to get away from the sweltering heat in the city. The Swimming Area—the most popular spot for youngsters and adults alike—provides: two slides in the chil-

dren's section of the lake, seesaws, swings, a merry-go-round, sandy beach, three acres of grassy land for sunbathing, and a refreshment stand. Excellent bus facilities, and an adequate parking lot, make the area a convenient and inexpensive location to "beat the heat".

## Signs Of Life

Traffic signs and signals, placed at strategic spots for protection of motorists and pedestrians, are all good signs—signs of life. And it's a good sign when a motorist or pedestrian observes them.

Last year in Connecticut 812 accidents were caused by motorists who ignored these traffic signs, and 500 accidents were caused by those who failed to give signals.

The oft-traveled road may be just the breeding place for an accident. Yet many motorists feel that because they travel the same stretch of road day in and day out, they are so familiar with the territory that it is unnecessary to observe traffic signs. That's a false security because the signs mean the same thing today as they did yesterday. And when the sign says Stop, it means that, not "Slow Down".

In all but a few states, the following, with some variation, are posted as Signs of Life:

Diamond—warning of traffic or road conditions ahead that requires extra caution and reduced speed.

Oblong—law and regulations (speed limits, no passing zones, etc.)

Eight-sided—Stop sign.

Round—warning of railroad crossing 300 to 500 feet ahead.

Crossbuck—tall white crossarms that stand at most highway-rail intersections and mean caution; be sure all tracks are clear before crossing.

## Classified Ads

### WANTED TO BUY

20" two-wheel bicycle in good condition, reasonable. Call 4-9106.

Vacumow Rotary lawn mower in any condition. Call 5-3064.

### FOR SALE

1941 Studebaker Champion; 1938 Chevrolet 3/4-ton pickup truck and hi-pressure Steam Jenny; storm windows and doors in assorted sizes; Florence parlor stove with a 12" burner. Call 4-1887.

Bedroom suite, gas stove, 2 enamel-top tables, Hamilton Beach food mixer, single and double iron beds with mattresses. Call 3-7201.

### FOR SALE

1940 Chevrolet convertible club coupe. Call 4-6605 after 5 p.m.

White Bengal philgas and oil range in fine condition, 34" long, 30" wide, \$65. Call 5-0627 after 5 p.m.

Breakfast set—unfinished table with separate plate glass top and two benches, \$10; small porcelain sink with faucets, \$10; complete hardware for swinging garage doors, \$5. Call 4-6007 after 6 p.m.

Six-room Cape Cod house four rooms finished, two rooms unfinished. House is brand new. Is located on Lounsbury St. (Washington Hill section) near a bus and school. Call 4-1546 after 5 p.m.

### TENANTS WANTED

A shore cottage on Independent Road at Myrtle Beach in Milford. Has five bright and airy rooms. Only a minute's walk from the beach. Available during August and September. Very reasonable. Call 4-7380.

## Concert, Playhouse Tickets For Employees

Tickets for "Pops" Concerts and productions at the Litchfield and Southbury playhouses are available, at industrial prices, to employees through the Employee Activities Office. For information and reservations, call ext. 834 or drop in to the office at 378 East Main Street (opposite Cherry Street).

Two more concerts will be presented in New Haven's Yale Bowl this season. They are:

(1) Vocalist Conchita Gaston and Pianist Jesus Maria Sanroma in Latin-American Night on August 12.

(2) New Haven's own Charles Kullman, star of the Metropolitan Opera, will sing at the final concert on August 26.

## Training Course



Ronald Seidel completed his training as a Draftsman and was graduated on Sunday, July 13, 1952. He has been assigned to the Drafting Room.

## Three Succumb

LOUIS NOSENZO, Salvage Department, died on July 12, 1952.

Mr. Nosenzo had thirty years of continuous Scovill service. He had served as an aluminum sorter in the Salvage Department until April 19, 1952, when he was forced to leave the Company because of illness.

MATTHEW GOMULINSKI, Casting Shop, died on July 15, 1952.

Mr. Gomulinski was hired on January 25, 1924, and had a continuous service record since 1936. In the Casting Shop since 1945, he was employed as a Reclaiming Mill Operator.

THOMAS NOLAN, Manufacturing Department Stores, died on July 22, 1952.

Mr. Nolan first came to Scovill in 1929, and worked intermittently until 1945 when his continuous service record started. At the time of his death, he was employed as a storekeeper in Manufacturing Department Stores. Other departments in which he had worked were the North Mill, Plant Protection, the Casting Shop, Button Eyelet and the Drawing Room.

## Voting This Year?

The election this November is going to be the most exciting — the most important — election in years, and you won't want to be left out. But you won't be able to do a thing about it, unless you are registered.

New voters are made on the first Wednesday of each month, in the Aldermanic Chambers (second floor) City Hall, from 9:00 a.m. to 8:00 p.m.

If you have had any change in address, or have not voted in four consecutive years—stop in at the Registrar of Voters' office any time during business hours. The staff will be glad to check your status for you.

Published by  
SCOVILL MANUFACTURING COMPANY  
99 Mill Street, Waterbury, Conn.  
Return Postage Guaranteed

POSTMASTER—If addressee has removed and new address is known, notify sender, Dept. B, on Form 3547, postage for which is guaranteed by the sender.

U. S. POSTAGE  
PAID  
WATERBURY, CONN.  
PERMIT NO. 123